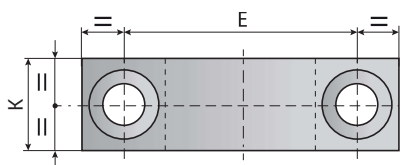
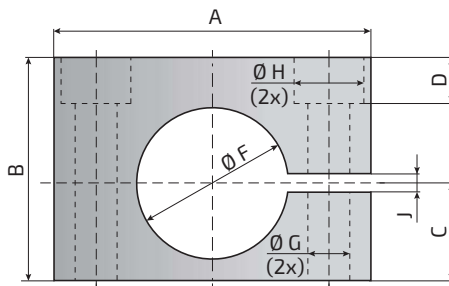
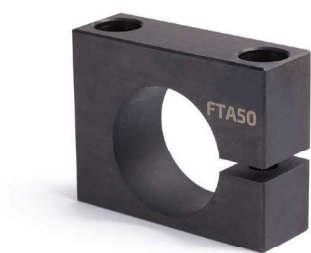


| | | | |
|-------------|------------|-----------------------|----------|
| BMW | B2 4009 | General Motors | 90.25.07 |
| FCA | 075.90.95 | MB | BB ... |
| Ford | W-DX35-62M | VW | 39D 848 |

Front support / Supporto frontale

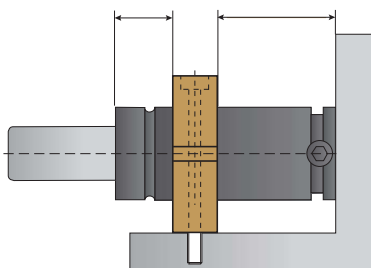


| Model Modello | Reference to Standards Norme di riferimento | For models... Per modelli... | A mm | B mm | C mm | D mm | E mm | Ø F mm | Ø G mm | Ø H mm | J mm | K mm |
|------------------|--|--|---------|---------|---------|---------|---------|-----------|-----------|-----------|---------|---------|
| FTA 32 | ISO 11901-2, VDI 3003 | AGS350, IGS150, TGS700, VV320-80, VV500, VV565 | 68 | 48 | 20.9 | 10 | 50 | 32.5 | 9 | 15 | 4 | 20 |
| 38 | ISO 11901-2, VDI 3003 | AGS500, IGS250, TGS1000 | 74 | 54 | 23.9 | 16 | 54 | 38.5 | 9 | 15 | 4 | 20 |
| 45 | ISO 11901-2, VDI 3003 | AGS750, IGS500, LGS500 | 80 | 60 | 27.5 | 22 | 60 | 45.5 | 9 | 15 | 4 | 20 |
| 50 | ISO 11901-2, VDI 3003 | AGS1000, IGS750, TGS2000, VV750 | 90 | 70 | 30 | 25 | 68 | 50.5 | 11 | 18 | 5 | 30 |
| 63 A | ISO 11901-2, VDI 3003 | AGS1500, TGS3000 | 108 | 82 | 36.5 | 27 | 84 | 63.5 | 11 | 18 | 5 | 30 |
| 63 B | - | AGS1500, TGS3000 | 105 | 80 | 40 | 11 | 80 | 63 | 10.5 | 17 | 10 | 30 |
| 75 | ISO 11901-2, VDI 3003 | AGS2400, IGS1500, TGS5000, VV2385 | 125 | 94 | 42 | 32 | 100 | 75.5 | 13.5 | 20 | 5 | 30 |
| 95 | ISO 11901-2, VDI 3003 | AGS4200, IGS3000, TGS8000, VV2945 | 140 | 115 | 52.5 | 33 | 115 | 95.5 | 13.5 | 20 | 5 | 30 |
| 120 | ISO 11901-2, VDI 3003 | AGS6600, IGS5000, TGS12000 | 170 | 140 | 65 | 58 | 145 | 120.5 | 13.5 | 20 | 7 | 30 |
| 150 | ISO 11901-2, VDI 3003 | AGS9500, IGS7500 | 200 | 170 | 80 | 68 | 175 | 150.5 | 13.5 | 20 | 7 | 30 |

Fixing possibilities / Fissaggi possibili

MAX
0.5 x diameter of the gas spring body
0,5 x diametro del corpo del cilindro

MIN
1/3 (one third) of dimension L_{min} of the gas spring
1/3 (un terzo) della dimensione L_{min} del cilindro



Dimension **MIN** must be respected to allow the over-pressure and over-stroke safety system to work properly (see dedicated catalogue section).

La dimensione **MIN** deve essere rispettata per consentire il corretto funzionamento del sistema di sicurezza in caso di sovrappressione ed extra-corsa (vedi relativa sezione sul catalogo).