

SŁUPY PROWADZĄCE

GUIDE PILLARS

CIS
STANDARD
WŁOSKI

Materiał / Material

1.7131

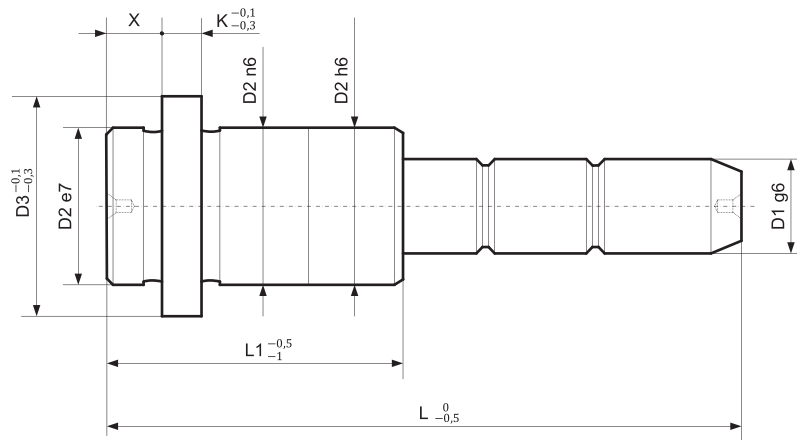
Twardość / Hardness

61 ± 63 HRC

Jak zamówić / How to order

Symbol: C1S256130

Inne wymiary na żądanie
Other dimensions on demand



Elementy prowadzące do form wtryskowych

| Symbol | D1 | L1 | L | X | D2 | D3 | K |
|---------------|----|-----|-----|----|----|----|---|
| C1S163680 | 16 | 36 | 80 | 10 | 22 | 26 | 5 |
| C1S163690 | | | 90 | | | | |
| C1S1636110 | | | 110 | | | | |
| C1S1636130 | 16 | 46 | 130 | 10 | 22 | 26 | 5 |
| C1S164690 | | | 90 | | | | |
| C1S1646110 | | | 110 | | | | |
| C1S1646130 | 16 | 56 | 130 | 10 | 22 | 26 | 5 |
| C1S1646150 | | | 150 | | | | |
| C1S1656110 | | | 110 | | | | |
| C1S1656130 | 16 | 66 | 130 | 10 | 22 | 26 | 5 |
| C1S1656150 | | | 150 | | | | |
| C1S1656170 | | | 170 | | | | |
| C1S1666110 | 16 | 76 | 110 | 10 | 22 | 26 | 5 |
| C1S1666130 | | | 130 | | | | |
| C1S1666150 | | | 150 | | | | |
| C1S1666170 | 16 | 86 | 170 | 10 | 22 | 26 | 5 |
| C1S1676130 | | | 130 | | | | |
| C1S1676150 | | | 150 | | | | |
| C1S1676170 | 16 | 96 | 170 | 10 | 22 | 26 | 5 |
| C1S1676190 | | | 190 | | | | |
| C1S1686150 | | | 150 | | | | |
| C1S1686170 | 16 | 106 | 170 | 10 | 22 | 26 | 5 |
| C1S1686190 | | | 190 | | | | |
| C1S20284680 | | | 80 | | | | |
| C1S20284690 | 20 | 46 | 90 | 10 | 28 | 32 | 6 |
| C1S202846110 | | | 110 | | | | |
| C1S202846130 | | | 130 | | | | |
| C1S202846150 | 20 | 56 | 150 | 10 | 28 | 32 | 6 |
| C1S20285690 | | | 90 | | | | |
| C1S202856110 | | | 110 | | | | |
| C1S202856130 | 20 | 66 | 130 | 10 | 28 | 32 | 6 |
| C1S202856150 | | | 150 | | | | |
| C1S202856170 | | | 170 | | | | |
| C1S202866110 | 20 | 76 | 110 | 10 | 28 | 32 | 6 |
| C1S202866130 | | | 130 | | | | |
| C1S202866150 | | | 150 | | | | |
| C1S202866170 | 20 | 86 | 170 | 10 | 28 | 32 | 6 |
| C1S202876130 | | | 130 | | | | |
| C1S202876150 | | | 150 | | | | |
| C1S202876170 | 20 | 96 | 170 | 10 | 28 | 32 | 6 |
| C1S202886150 | | | 150 | | | | |
| C1S202886170 | | | 170 | | | | |
| C1S202886190 | 20 | 106 | 190 | 10 | 28 | 32 | 6 |
| C1S2028106150 | | | 150 | | | | |
| C1S2028106170 | | | 170 | | | | |
| C1S2028106190 | 20 | 116 | 190 | 10 | 28 | 32 | 6 |
| C1S2028106210 | | | 210 | | | | |

| Symbol | D1 | L1 | L | X | D2 | D3 | K |
|---------------|----|-----|-----|----|----|----|---|
| C1S20304680 | 20 | 46 | 80 | 10 | 30 | 34 | 6 |
| C1S20304690 | | | 90 | | | | |
| C1S203046110 | | | 110 | | | | |
| C1S203046130 | 20 | 56 | 130 | 10 | 30 | 34 | 6 |
| C1S203046150 | | | 150 | | | | |
| C1S20305690 | | | 90 | | | | |
| C1S203056110 | 20 | 66 | 110 | 10 | 30 | 34 | 6 |
| C1S203056130 | | | 130 | | | | |
| C1S203056150 | | | 150 | | | | |
| C1S203056170 | 20 | 76 | 170 | 10 | 30 | 34 | 6 |
| C1S203066110 | | | 110 | | | | |
| C1S203066130 | | | 130 | | | | |
| C1S203066150 | 20 | 86 | 150 | 10 | 30 | 34 | 6 |
| C1S203066170 | | | 170 | | | | |
| C1S203076130 | | | 130 | | | | |
| C1S203076150 | 20 | 96 | 150 | 10 | 30 | 34 | 6 |
| C1S203076170 | | | 170 | | | | |
| C1S203086150 | | | 150 | | | | |
| C1S203086170 | 20 | 106 | 170 | 10 | 30 | 34 | 6 |
| C1S203086190 | | | 190 | | | | |
| C1S2030106150 | | | 150 | | | | |
| C1S2030106170 | 20 | 116 | 170 | 10 | 30 | 34 | 6 |
| C1S2030106190 | | | 190 | | | | |
| C1S2030106210 | | | 210 | | | | |
| C1S25344690 | 25 | 46 | 90 | 10 | 34 | 38 | 7 |
| C1S253446110 | | | 110 | | | | |
| C1S253446130 | | | 130 | | | | |
| C1S253446150 | 25 | 56 | 150 | 10 | 34 | 38 | 7 |
| C1S25345690 | | | 90 | | | | |
| C1S253456110 | | | 110 | | | | |
| C1S253456130 | 25 | 66 | 130 | 10 | 34 | 38 | 7 |
| C1S253456150 | | | 150 | | | | |
| C1S253456170 | | | 170 | | | | |
| C1S253466110 | 25 | 76 | 110 | 10 | 34 | 38 | 7 |
| C1S253466130 | | | 130 | | | | |
| C1S253466150 | | | 150 | | | | |
| C1S253466170 | 25 | 86 | 170 | 10 | 34 | 38 | 7 |
| C1S253476130 | | | 130 | | | | |
| C1S253476150 | | | 150 | | | | |
| C1S253476170 | 25 | 96 | 170 | 10 | 34 | 38 | 7 |
| C1S253476190 | | | 190 | | | | |
| C1S253486150 | | | 150 | | | | |
| C1S253486170 | 25 | 106 | 170 | 10 | 34 | 38 | 7 |
| C1S253486190 | | | 190 | | | | |

SŁUPY PROWADZĄCE

GUIDE PILLARS

| Symbol | D1 | L1 | L | X | D2 | D3 | K |
|---------------|----|-----|-----|----|----|----|---|
| C1S2534106150 | 25 | 106 | 150 | 10 | 34 | 38 | 7 |
| C1S2534106170 | | | 170 | | | | |
| C1S2534106190 | | | 190 | | | | |
| C1S2534106210 | | | 210 | | | | |
| C1S25364690 | 25 | 46 | 90 | 10 | 36 | 40 | 7 |
| C1S253646110 | | | 110 | | | | |
| C1S253646130 | | | 130 | | | | |
| C1S253646150 | | | 150 | | | | |
| C1S25365690 | 25 | 56 | 90 | 10 | 36 | 40 | 7 |
| C1S253656110 | | | 110 | | | | |
| C1S253656130 | | | 130 | | | | |
| C1S253656150 | | | 150 | | | | |
| C1S253656170 | 25 | 66 | 170 | 10 | 36 | 40 | 7 |
| C1S253666110 | | | 110 | | | | |
| C1S253666130 | | | 130 | | | | |
| C1S253666150 | | | 150 | | | | |
| C1S253666170 | 25 | 76 | 170 | 10 | 36 | 40 | 7 |
| C1S253676130 | | | 130 | | | | |
| C1S253676150 | | | 150 | | | | |
| C1S253676170 | | | 170 | | | | |
| C1S253676190 | 25 | 86 | 190 | 10 | 36 | 40 | 7 |
| C1S253686150 | | | 150 | | | | |
| C1S253686170 | | | 170 | | | | |
| C1S253686190 | | | 190 | | | | |
| C1S2536106150 | 25 | 106 | 150 | 10 | 36 | 40 | 7 |
| C1S2536106170 | | | 170 | | | | |
| C1S2536106190 | | | 190 | | | | |
| C1S2536106210 | | | 210 | | | | |
| C1S3246110 | 32 | 46 | 110 | 10 | 40 | 45 | 7 |
| C1S3246130 | | | 130 | | | | |
| C1S3246150 | | | 150 | | | | |
| C1S3256110 | | | 110 | | | | |
| C1S3256130 | 32 | 56 | 130 | 10 | 40 | 45 | 7 |
| C1S3256150 | | | 150 | | | | |
| C1S3256170 | | | 170 | | | | |
| C1S3266110 | | | 110 | | | | |
| C1S3266130 | 32 | 66 | 130 | 10 | 40 | 45 | 7 |
| C1S3266150 | | | 150 | | | | |
| C1S3266170 | | | 170 | | | | |
| C1S3266190 | | | 190 | | | | |
| C1S3276130 | 32 | 76 | 130 | 10 | 40 | 45 | 7 |
| C1S3276150 | | | 150 | | | | |
| C1S3276170 | | | 170 | | | | |
| C1S3276190 | | | 190 | | | | |
| C1S3286150 | 32 | 86 | 150 | 10 | 40 | 45 | 7 |
| C1S3286170 | | | 170 | | | | |
| C1S3286190 | | | 190 | | | | |
| C1S32106170 | | | 170 | | | | |
| C1S32106190 | 32 | 106 | 190 | 10 | 40 | 45 | 7 |
| C1S32106210 | | | 210 | | | | |
| C1S4056130 | 40 | 56 | 130 | 10 | 48 | 52 | 8 |
| C1S4056150 | | | 150 | | | | |
| C1S4066130 | | | 130 | | | | |
| C1S4066150 | 40 | 66 | 150 | 10 | 48 | 52 | 8 |
| C1S4066170 | | | 170 | | | | |
| C1S4076150 | | | 150 | | | | |
| C1S4076170 | 40 | 76 | 170 | 10 | 48 | 52 | 8 |
| C1S4076190 | | | 190 | | | | |
| C1S4076210 | | | 210 | | | | |
| C1S4086150 | 40 | 86 | 150 | 10 | 48 | 52 | 8 |
| C1S4086170 | | | 170 | | | | |
| C1S4086190 | | | 190 | | | | |
| C1S4086210 | | | 210 | | | | |
| C1S40106170 | 40 | 106 | 170 | 10 | 48 | 52 | 8 |
| C1S40106190 | | | 190 | | | | |
| C1S40106210 | | | 210 | | | | |

Elementy prowadzące do form wtryskowych