

WYPYCHACZE TULEJOWE HARTOWANE Z ŁBEM CYLINDRYCZNYM

EJECTOR SLEEVES HARDENED WITH CYLINDRICAL HEAD

DIN 16756 / ISO 8405

ECBH

Materiał / Material

WS - 1.2510
Łeb sęcpany. Wymiary d1,d2,b1
szlifowane i hartowane.
Head hot folded. Diameters d1,d2,b1
hardened and fine ground finished.

Twardość / Hardness

Trzpień / Pin 60±2 HRC
Łeb / Head 45±5 HRC

Warunki pracy / working conditions

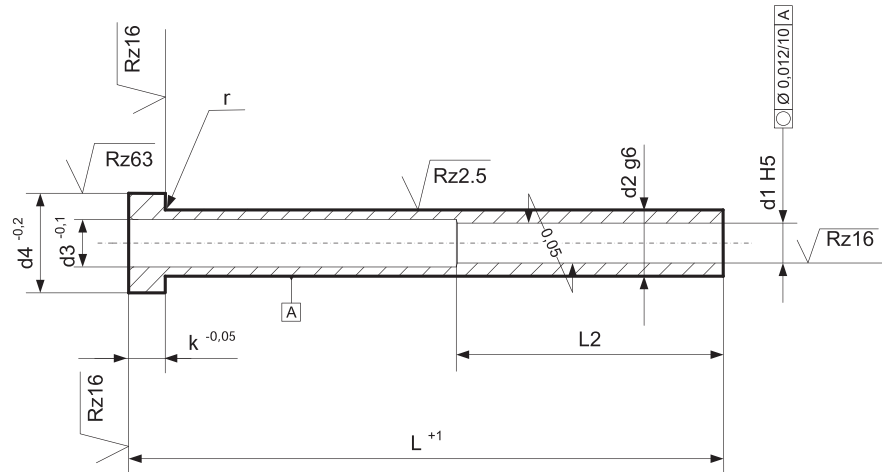
Odporność temp./ Temp. resistance: 220 °C

Jak zamówić / How to order

Symbol: ECBH
+
d1: 5,0
+
d2: 8,0
+
L: 200

ECBH 5,0x8,0x200

Inne wymiary na żądanie
Other dimensions on demand



d1	d2	d3	d4	k	L2	r	L +1													
							75	100	125	150	175	200	225	250	275	300				
H5	g6	-0.1	-0.2	-0.05																
1.6	3.0	2.0	6.0	3.0	350	0.3	x	x	x	x	x	x								
2.0	4.0	2.5	8.0	3.0	350	0.3	x	x	x	x	x	x	x							
2.2	4.0	2.5	8.0	3.0	350	0.3	x	x	x	x	x	x	x							
2.5	4.0	2.8	8.0	3.0	350	0.3		x	x	x	x	x	x							
2.5	5.0	3.0	10.0	3.0	350	0.3	x	x	x	x	x	x	x							
2.7	5.0	3.0	10.0	3.0	450	0.3	x	x	x	x	x	x	x	x						
3.0	5.0	3.5	10.0	3.0	450	0.3	x	x	x	x	x	x	x	x						
3.0	6.0	3.5	12.0	5.0	450	0.5		x	x	x	x	x	x	x	x					
3.2	5.0	3.5	10.0	3.0	450	0.3	x	x	x	x	x	x	x	x						
3.5	5.0	3.8	10.0	3.0	450	0.3			x	x	x									
3.5	6.0	4.0	12.0	5.0	450	0.5	x	x	x	x	x	x	x	x						
3.7	6.0	4.0	12.0	5.0	450	0.5	x	x	x	x	x	x	x	x						
4.0	6.0	4.5	12.0	5.0	450	0.5	x	x	x	x	x	x	x	x	x					
4.0	8.0	4.5	14.0	5.0	450	0.5	x	x	x											
4.2	8.0	5.0	14.0	5.0	450	0.5	x	x	x	x	x	x	x	x	x					
4.5	6.0	4.8	12.0	5.0	450	0.5	x	x	x	x	x	x	x	x	x					
4.5	8.0	5.0	14.0	5.0	450	0.5		x	x	x	x	x								
5.0	8.0	5.5	14.0	5.0	450	0.5	x	x	x	x	x	x	x	x	x					
5.2	8-9	5.5	14.0	5.0	450	0.5	x	x	x	x	x	x	x	x	x	x				
5.5	9.0	6.0	16.0	5.0	450	0.5	x	x	x	x	x	x	x	x	x	x				
6.0	10.0	6.5	16.0	5.0	450	0.5	x	x	x	x	x	x	x	x	x	x				
6.2	10.0	6.5	16.0	5.0	450	0.5	x	x	x	x	x	x	x	x	x	x				
6.5	10.0	6.5	16.0	5.0	450	0.8	x	x	x	x	x	x	x	x	x	x				
8.0	12.0	8.5	20.0	7.0	450	0.8	x	x	x	x	x	x	x	x	x	x				
8.2	12.0	8.5	20.0	7.0	450	0.8	x	x	x	x	x	x	x	x	x	x				
10.0	14.0	10.5	22.0	7.0	500	0.8	x	x	x	x	x	x	x	x	x	x				
10.5	14.0	11.0	22.0	7.0	500	0.8	x	x	x	x	x	x	x	x	x	x				
12.0	16.0	12.5	22.0	7.0	500	0.8	x	x	x	x	x	x	x	x	x	x				
12.5	16.0	13.0	22.0	7.0	500	0.8	x	x	x	x	x	x	x	x	x	x				