

WYPYCHACZE PŁASKIE HARTOWANE Z ŁBEM CYLINDRYCZNYM

FLAT EJECTOR PINS HARDENED WITH CYLINDRICAL HEAD

DIN 1530LA / ISO 8693

ECFH

Materiał / Material

WS - 1.2510
Łeb odprężony
Trzpień szlifowany
Head hot folded,
Shaft through hardened,
fine ground finished.

Twardość / Hardness

Trzpień / Shaft 60±2 HRC
Łeb / Head 45±5 HRC

Warunki pracy / working conditions

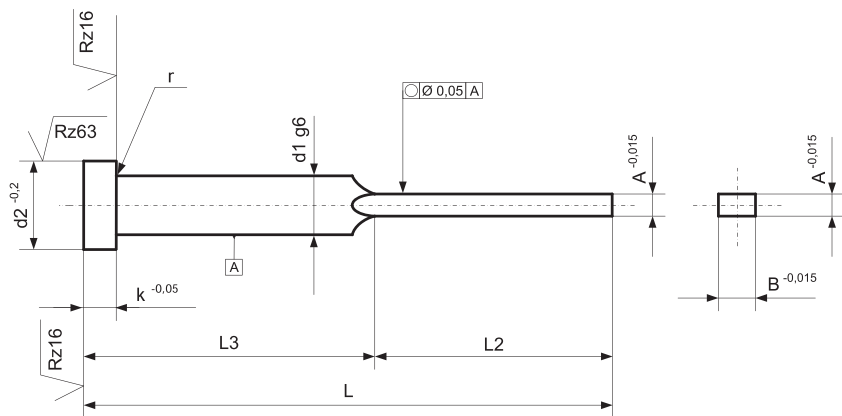
Odporność temp./ Temp. resistance: 220 °C

Jak zamówić / How to order

Symbol: ECFH
A: + 2,0
B: + 5,5
L: + 160

ECFH 2,0x5,5X160

Inne wymiary na żądanie
Other dimensions on demand



A	B	d1	d2	k	r	L2								
						30	40	50	65	80	100	125	155	
						L3								
						30	40	50	60	80	100	125	160	
-0.015	-0.015	g6	-0.2	-0.05		L								
						60	80	100	125	160	200	250	315	
0.8	3.5	4.0	8.0	3.0	0.3	x	x	x	x					
1.0	3.5	4.0	8.0	3.0	0.3	x	x	x	x					
1.2	3.5	4.0	8.0	3.0	0.3	x	x	x	x					
0.8	3.8	4.2	8.0	3.0	0.3	x	x	x	x					
1.0	3.8	4.2	8.0	3.0	0.3	x	x	x	x	x				
1.2	3.8	4.2	8.0	3.0	0.3	x	x	x	x	x	x			
1.0	4.5	5.0	10.0	3.0	0.3		x	x	x	x	x			
1.2	4.5	5.0	10.0	3.0	0.3		x	x	x	x	x			
1.5	4.5	5.0	10.0	3.0	0.3		x	x	x	x	x			
1.6	4.5	5.0	10.0	3.0	0.3		x	x	x	x	x			
1.8	4.5	5.0	10.0	3.0	0.5		x	x	x	x	x			
1.0	5.5	6.0	12.0	5.0	0.5		x	x	x	x	x			
1.2	5.5	6.0	12.0	5.0	0.5		x	x	x	x	x			
1.5	5.5	6.0	12.0	5.0	0.5			x	x	x	x			
1.6	5.5	6.0	12.0	5.0	0.5			x	x	x	x			
1.8	5.5	6.0	12.0	5.0	0.5				x	x	x			
2.0	5.5	6.0	12.0	5.0	0.5				x	x	x			
1.2	7.5	8.0	14.0	5.0	0.5				x	x	x			
1.5	7.5	8.0	14.0	5.0	0.5				x	x	x			
1.6	7.5	8.0	14.0	5.0	0.5				x	x	x			
1.8	7.5	8.0	14.0	5.0	0.5					x	x			
2.0	7.5	8.0	14.0	5.0	0.5					x	x	x		
1.5	9.5	10.0	16.0	5.0	0.5						x	x		
1.8	9.5	10.0	16.0	5.0	0.5						x	x		
2.0	9.5	10.0	16.0	5.0	0.5						x	x	x	
2.0	11.5	12.0	18.0	7.0	0.8							x	x	x

Wypychacze do form wtryskowych