

SŁUPY PROWADZĄCE

HEAD PILOT PINS

Materiał / Material

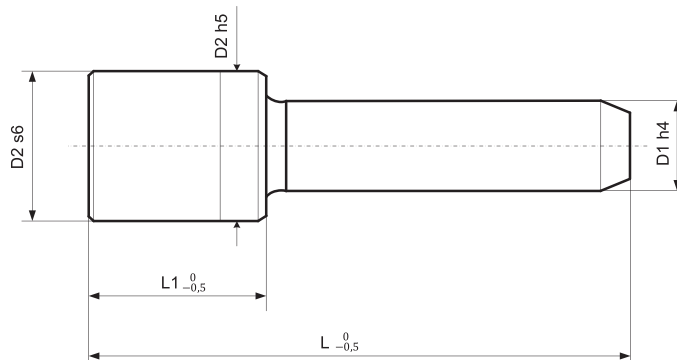
1.7131

Twardość / Hardness

61 ÷ 63 HRC

Jak zamówić / How to order

Symbol: C325135

Inne wymiary na żądanie
Other dimensions on demand

Elementy prowadzące do tłoczników

Symbol	D1	Symbol	D1	L	D2	L1
C31585	15	C31685	16	85	26	30
C31595		C31695		95		
C315105		C316105		105		
C315115		C316115		115		
C315125		C316125		125		
C315135		C316135		135		
C315145	C316145	145				
C315155	C316155	155				
C31785	17	C31885	18	85	30	35
C31795		C31895		95		
C317105		C318105		105		
C317115		C318115		115		
C317125		C318125		125		
C317135		C318135		135		
C317145	C318145	145				
C317155	C318155	155				
C317170	C318170	170				
C317185	C318185	185				
C317200	C318200	200				
C31985	19	C32085	20	85	30	35
C31995		C32095		95		
C319105		C320105		105		
C319115		C320115		115		
C319125		C320125		125		
C319135		C320135		135		
C319145	C320145	145				
C319155	C320155	155				
C319170	C320170	170				
C319185	C320185	185				
C319200	C320200	200				
C324115	24	C325115	25	115	36	40
C324125		C325125		125		
C324135		C325135		135		
C324145		C325145		145		
C324155		C325155		155		
C324170		C325170		170		
C324185	C325185	185				
C324200	C325200	200				
C324225	C325225	225				
C324250	C325250	250				

Symbol	D1	Symbol	D1	L	D2	L1
C330115	30	C331115	31	115	45	40
C330125		C331125		125		
C330135		C331135		135		
C330145		C331145		145		
C330155		C331155		155		
C330170		C331170		170		
C330185	C331185	185				
C330200	C331200	200				
C330225	C331225	225				
C330250	C331250	250				
C330275	C331275	275				
C330300	C331300	300				
C340145	40	C341145	41	145	55	70
C340155		C341155		155		
C340170		C341170		170		
C340185		C341185		185		
C340200		C341200		200		
C340225		C341225		225		
C340250	C341250	250				
C340275	C341275	275				
C340300	C341300	300				
C340325	C341325	325				
C340350	C341350	350				
C340400	C341400	400				
C350170	50	C351170	51	170	70	70
C350185		C351185		185		
C350200		C351200		200		
C350225		C351225		225		
C350250		C351250		250		
C350275		C351275		275		
C350300	C351300	300				
C350325	C351325	325				
C350350	C351350	350				
C350400	C351400	400				