

# KOŁNIERZE MOCUJĄCE DO SŁUPÓW CS

RETAINERS FOR GUIDE PILLARS CS

**PCS**

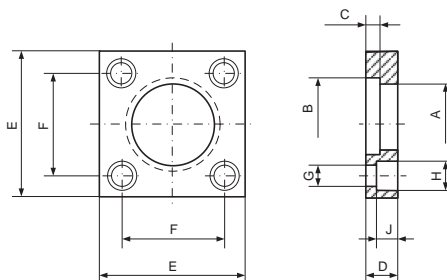
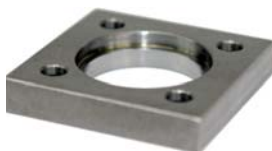
## AFNOR

Materiał / Material

1.1730

Jak zamówić / How to order

Symbol: PCS40



| Symbol | A   | B   | G   | H  | J  | D  | C   | E   | F   |
|--------|-----|-----|-----|----|----|----|-----|-----|-----|
| PCS25  | 25  | 28  | 6,6 | 11 | 7  | 10 | 2,7 | 45  | 31  |
| PCS32  | 32  | 37  | 6,6 | 11 | 7  | 10 | 4,2 | 56  | 36  |
| PCS40  | 40  | 45  | 6,6 | 11 | 7  | 12 | 4,2 | 70  | 50  |
| PCS50  | 50  | 55  | 9   | 16 | 9  | 14 | 4,2 | 80  | 55  |
| PCS63  | 63  | 70  | 11  | 18 | 11 | 18 | 6,2 | 100 | 70  |
| PCS80  | 80  | 87  | 13  | 22 | 14 | 20 | 6,2 | 110 | 80  |
| PCS100 | 100 | 107 | 13  | 22 | 14 | 20 | 6,2 | 140 | 100 |

# PIERŚCIEŃ MOCUJĄCE DO SŁUPÓW CS

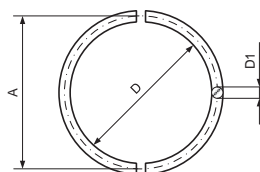
RINGS FOR GUIDE PILLARS CS

**ACS**

## AFNOR

Jak zamówić / How to order

Symbol: ACS40



| Symbol | A   | D    | D1  |
|--------|-----|------|-----|
| ACS25  | 25  | 22,5 | 2,5 |
| ACS32  | 32  | 28   | 4   |
| ACS40  | 40  | 36   | 4   |
| ACS50  | 50  | 46   | 4   |
| ACS63  | 63  | 57   | 6   |
| ACS80  | 80  | 74   | 6   |
| ACS100 | 100 | 94   | 6   |

Elementy prowadzące do tłoczników