

PODKŁADKI OKRĄGŁE

FLAT WASHERS

ISO 7089/DIN 125

FW

Klasa / Class

140HV/200HV

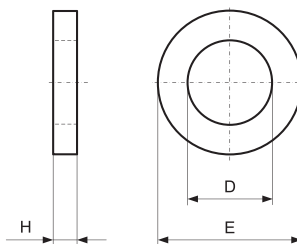
Jak zamówić / How to order

Symbol: FW

M: M4

FW M4

Inne wymiary na żądanie
Other dimensions on demand



| D | 2.2 | 3.2 | 4.3 | 5.3 | 6.4 | 7.4 | 8.4 | 10.5 | 13 | 15 | 17 | 19 | 21 | 23 | 25 | 28 | 31 | 34 | 37 | 40 | 43 | 46 | 50 | 54 | 58 | 65 | 66 | 74 |
|---|-----|-----|-----|-----|-----|-----|-----|------|-----|-----|-----|-----|-----|-----|-----|-----|-----|-----|-----|-----|-----|-----|-----|-----|-----|-----|-----|-----|
| E | 5 | 7 | 9 | 10 | 12 | 14 | 16 | 20 | 24 | 28 | 30 | 34 | 37 | 39 | 44 | 50 | 56 | 60 | 66 | 72 | 78 | 85 | 92 | 98 | 105 | 110 | 115 | 125 |
| H | 0.3 | 0.5 | 0.8 | 1 | 1.6 | 1.6 | 1.6 | 2 | 2.5 | 2.5 | 3 | 3 | 3 | 3 | 4 | 4 | 4 | 5 | 5 | 6 | 7 | 7 | 8 | 8 | 9 | 9 | 9 | 10 |
| M | M2 | M3 | M4 | M5 | M6 | M7 | M8 | M10 | M12 | M14 | M16 | M18 | M20 | M22 | M24 | M27 | M30 | M33 | M36 | M39 | M42 | M45 | M48 | M52 | M56 | M60 | M64 | M72 |
| | X | X | X | X | X | X | X | X | X | X | X | X | X | X | X | X | X | X | X | X | X | X | X | X | X | X | X | X |

PODKŁADKI OKRĄGŁE POWIĘKSZONE

FLAT WASHERS LARGE DIAMETER

ISO 7093 / DIN 9021

FWP

Klasa / Class

140HV/200HV

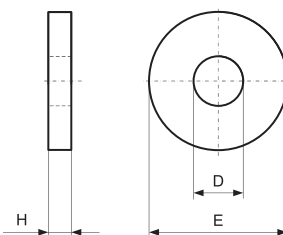
Jak zamówić / How to order

Symbol: FWP

M: M6

FWP M6

Inne wymiary na żądanie
Other dimensions on demand



| D | 3.2 | 4.3 | 5.3 | 6.4 | 7.4 | 8.4 | 10.5 | 13 | 15 | 17 | 20 | 22 | 26 | 33 | 39 |
|---|-----|-----|-----|-----|-----|-----|------|-----|-----|-----|-----|-----|-----|-----|-----|
| E | 9 | 12 | 15 | 18 | 22 | 24 | 30 | 37 | 44 | 50 | 56 | 60 | 72 | 92 | 110 |
| H | 0.8 | 1 | 1.2 | 1.6 | 2 | 2 | 2.5 | 3 | 3 | 3 | 4 | 4 | 5 | 6 | 8 |
| M | M3 | M4 | M5 | M6 | M7 | M8 | M10 | M12 | M14 | M16 | M18 | M20 | M24 | M30 | M36 |
| | X | X | X | X | X | X | X | X | X | X | X | X | X | X | X |

PODKŁADKI SPRĘŻYSTE

SPRING WASHERS

DIN 127B

SW

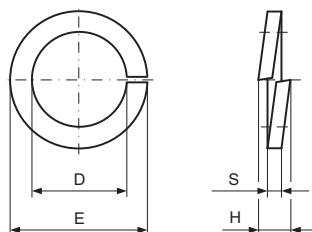
Klasa / Class

5.8

Jak zamówić / How to order

Symbol: SW.0100

Inne wymiary na żądanie
Other dimensions on demand



| Symbol | M | D | E | S | H | Symbol | M | D | E | S | H | Symbol | M | D | E | S | H |
|---------|------|-----|------|-----|-----|---------|-----|------|------|-----|------|---------|-----|------|------|---|------|
| SW.0020 | M2 | 2.1 | 4.4 | 0.5 | 1.2 | SW.0100 | M10 | 10.2 | 18.1 | 2.2 | 5.2 | SW.0300 | M30 | 30.5 | 48.2 | 6 | 14.2 |
| SW.0025 | M2.5 | 2.6 | 5.1 | 0.6 | 1.4 | SW.0120 | M12 | 12.2 | 21.1 | 2.5 | 5.9 | SW.0330 | M33 | 33.5 | 55.2 | 6 | 14.2 |
| SW.0030 | M3 | 3.1 | 6.2 | 0.8 | 1.9 | SW.0140 | M14 | 14.2 | 24.1 | 3 | 7.1 | SW.0360 | M36 | 36.5 | 58.2 | 6 | 14.2 |
| SW.0035 | M3.5 | 3.6 | 6.7 | 0.8 | 1.9 | SW.0160 | M16 | 16.2 | 27.4 | 3.5 | 8.3 | SW.0390 | M39 | 39.5 | 61.2 | 6 | 14.2 |
| SW.0040 | M4 | 4.1 | 7.6 | 0.9 | 2.1 | SW.0180 | M18 | 18.2 | 29.4 | 3.5 | 8.3 | SW.0420 | M42 | 42.5 | 68.2 | 7 | 16.5 |
| SW.0050 | M5 | 5.1 | 9.2 | 1.2 | 2.8 | SW.0200 | M20 | 20.2 | 33.6 | 4 | 9.4 | SW.0450 | M45 | 45.5 | 71.2 | 7 | 16.5 |
| SW.0060 | M6 | 6.1 | 11.8 | 1.6 | 3.8 | SW.0220 | M22 | 22.5 | 35.9 | 4 | 9.4 | SW.0480 | M48 | 49 | 75 | 7 | 16.5 |
| SW.0070 | M7 | 7.1 | 12.8 | 1.6 | 3.8 | SW.0240 | M24 | 24.5 | 40 | 5 | 11.8 | SW.0520 | M52 | 53 | 83 | 8 | 18.9 |
| SW.0080 | M8 | 8.1 | 14.8 | 2 | 4.7 | SW.0270 | M27 | 27.5 | 43 | 5 | 11.8 | SW.0560 | M56 | 57 | 87 | 8 | 18.9 |