

WYPYCHACZE PŁASKIE AZOTOWANE Z ŁBEM CYLINDRYCZNYM

ECFA

FLAT EJECTOR PINS NITRIDED WITH CYLINDRICAL HEAD

DIN 1530LAP / ISO 8693

Materiał / Material

WS - 1.2344 Łeb spęczany
Trzpień szlifowany i azotowany
Cylindrical head folded and fine ground
finished. Shaft and flat gas /plasma nitrided
and fine ground finished.

Twardość / Hardness

Powierzchnia / Surface **70 HRC**
Rdzeń / Core **40-45 HRC**
Łeb / Head **45±5 HRC**

Warunki pracy / working conditions

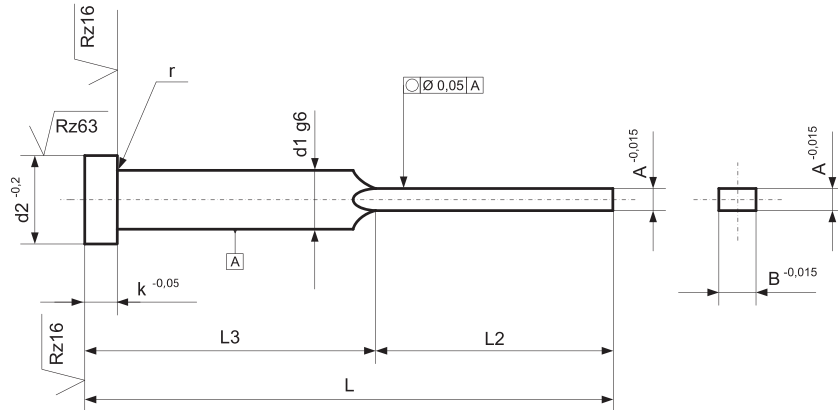
Oporność temp./ Temp. resistance: **650 °C**
Wytrzymałość rdzenia / Core STRENGTH approx.
150Kp/mm²

Jak zamówić / How to order

Symbol: **ECFA**
+
A: 2,0
+
B: 10,0
+
L: 200

ECFA 2,0x10,0x200

Inne wymiary na żądanie
Other dimensions on demand



Wypychacze do form wtryskowych

| A | B | d1 | d2 | k | r | L2 | | | | | | | |
|--------|--------|------|------|-------|-----|----|----|-----|-----|-----|-----|-----|-----|
| | | | | | | 30 | 40 | 50 | 65 | 80 | 100 | 125 | 155 |
| -0,015 | -0,015 | g6 | -0,2 | -0,05 | | L3 | | | | | | | |
| | | | | | | 30 | 40 | 50 | 60 | 80 | 100 | 125 | 160 |
| | | | | | | L | | | | | | | |
| | | | | | | 60 | 80 | 100 | 125 | 160 | 200 | 250 | 315 |
| 0,8 | 3,5 | 4,0 | 8,0 | 3,0 | 0,3 | x | x | x | x | | | | |
| 1,0 | 3,5 | 4,0 | 8,0 | 3,0 | 0,3 | x | x | x | x | | | | |
| 1,2 | 3,5 | 4,0 | 8,0 | 3,0 | 0,3 | x | x | x | x | | | | |
| 0,8 | 3,8 | 4,2 | 8,0 | 3,0 | 0,3 | x | x | x | x | | | | |
| 1,0 | 3,8 | 4,2 | 8,0 | 3,0 | 0,3 | x | x | x | x | x | | | |
| 1,2 | 3,8 | 4,2 | 8,0 | 3,0 | 0,3 | x | x | x | x | x | x | | |
| 1,0 | 4,5 | 5,0 | 10,0 | 3,0 | 0,3 | | x | x | x | x | x | | |
| 1,2 | 4,5 | 5,0 | 10,0 | 3,0 | 0,3 | | x | x | x | x | x | | |
| 1,5 | 4,5 | 5,0 | 10,0 | 3,0 | 0,3 | | x | x | x | x | x | | |
| 1,6 | 4,5 | 5,0 | 10,0 | 3,0 | 0,3 | | x | x | x | x | x | | |
| 1,8 | 4,5 | 5,0 | 10,0 | 3,0 | 0,5 | | x | x | x | x | x | | |
| 1,0 | 5,5 | 6,0 | 12,0 | 5,0 | 0,5 | | x | x | x | x | x | | |
| 1,2 | 5,5 | 6,0 | 12,0 | 5,0 | 0,5 | | | x | x | x | x | | |
| 1,5 | 5,5 | 6,0 | 12,0 | 5,0 | 0,5 | | | x | x | x | x | | |
| 1,6 | 5,5 | 6,0 | 12,0 | 5,0 | 0,5 | | | | x | x | x | | |
| 1,8 | 5,5 | 6,0 | 12,0 | 5,0 | 0,5 | | | | x | x | x | | |
| 2,0 | 5,5 | 6,0 | 12,0 | 5,0 | 0,5 | | | | | x | x | | |
| 1,5 | 7,5 | 8,0 | 14,0 | 5,0 | 0,5 | | | | x | x | x | | |
| 1,6 | 7,5 | 8,0 | 14,0 | 5,0 | 0,5 | | | | x | x | x | | |
| 1,8 | 7,5 | 8,0 | 14,0 | 5,0 | 0,5 | | | | x | | x | | |
| 2,0 | 7,5 | 8,0 | 14,0 | 5,0 | 0,5 | | | | | x | | | x |
| 1,8 | 9,5 | 10,0 | 16,0 | 5,0 | 0,5 | | | | | | x | x | |
| 2,0 | 9,5 | 10,0 | 16,0 | 5,0 | 0,5 | | | | | | x | x | x |
| 1,5 | 10,0 | 12,0 | 18,0 | 7,0 | 0,8 | | | | x | | x | x | |
| 1,8 | 10,0 | 12,0 | 18,0 | 7,0 | 0,8 | | | | | | x | x | |
| 2,0 | 10,0 | 12,0 | 18,0 | 7,0 | 0,8 | | | | | | x | x | |
| 2,0 | 11,5 | 12,0 | 18,0 | 7,0 | 0,8 | | | | x | | | | x |
| 1,8 | 12,0 | 14,0 | 22,0 | 7,0 | 0,8 | | | | | | x | x | |
| 2,0 | 12,0 | 14,0 | 22,0 | 7,0 | 0,8 | | | | | | x | x | |
| 2,0 | 15,0 | 16,0 | 22,0 | 7,0 | 0,8 | | | | | | | x | x |
| 2,5 | 15,0 | 16,0 | 22,0 | 7,0 | 0,8 | | | | | | | x | x |
| 3,0 | 19,0 | 20,0 | 26,0 | 8,0 | 1,0 | | | | | | | x | x |
| 4,0 | 19,0 | 20,0 | 26,0 | 8,0 | 1,0 | | | | | | | x | x |