

# SŁUPY PROWADZĄCE

## STRIPPER MOUNTED PILLARS

# CEAS

Materiał / Material

1.7131

Twardość / Hardness

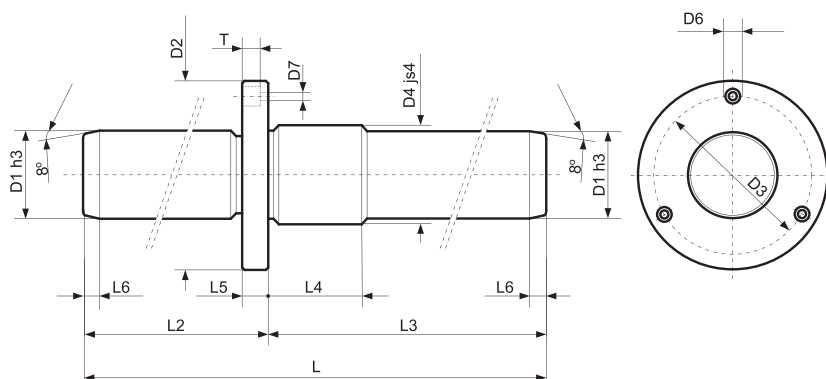
61 + 63 HRC

Jak zamówić / How to order

Symbol: CEAS4090110

Inne wymiary na żądanie  
Other dimensions on demand

Zaczepy i śruby str. 285  
Retaining clamps and screws page 285



Symbol	D1	L2	L3	L	D2	D3	D4	D6	D7	L4	L5	L6	T
CEAS197090	19	70	90	160	42	32	22	8	4,5	20	8	4	4,6
CEAS1970100		70	100	170									
CEAS1980100		80	100	180									
CEAS1980110		80	110	190									
CEAS1990110		90	110	200									
CEAS19100110	100	110	210										
CEAS2580100	25	80	100	180	48	38	26	8	4,5	22	8	6	4,6
CEAS2580110		80	110	190									
CEAS2590110		90	110	200									
CEAS2590120		90	120	210									
CEAS25100120		100	120	220									
CEAS25110120	110	120	230										
CEAS3280100	32	80	100	180	60	48	34	10	5,5	25	10	7	5,7
CEAS3280110		80	110	190									
CEAS3290110		90	110	200									
CEAS3290120		90	120	210									
CEAS32100120		100	120	220									
CEAS32100130		100	130	230									
CEAS32110130	110	130	240										
CEAS32110140	110	140	250										
CEAS4090110	40	90	110	200	70	56	42	11	6,6	27	12	7	6,8
CEAS4090120		90	120	210									
CEAS40100120		100	120	220									
CEAS40100130		100	130	230									
CEAS40110130		110	130	240									
CEAS40110140		110	140	250									
CEAS40120140	120	140	260										

Elementy prowadzące do tłoczników